

TRANSCENDENCE'S

BROADWAY IN SONOMA

IN THE MAGICAL FIELD OF DREAMS



2024
SUMMER
SEASON

JUNE 20-23 | SUMMERTIME!

JULY 25-28 | DON'T STOP US NOW

AUG 15-18 | DANCING IN THE STREET

SEPT 19-22 | THE GALA: A SENTIMENTAL JOURNEY

TRANSCENDENCE
THEATRE COMPANY

BENZIGER
FAMILY WINERY

The Press Democrat



Wealth
Management

**FIELD OF
DREAMS**



Proud to support Transcendence Theatre Company's Broadway in Sonoma

For over 100 years, a commitment to our communities has been one of RBC Wealth Management's core values. We are proud of our reputation for corporate citizenship and believe our most visible imprint is through the great work being done by the organizations we support.

Strengthening your financial securitySM

Marin

300B Drakes Landing Road, Suite 155 | Greenbrae, CA 94904

(415) 445-8460

us.rbcwealthmanagement.com/marin



**Wealth
Management**

Investment and insurance products: • Not insured by the FDIC or any other federal government agency • Not a deposit of, or guaranteed by, the bank or an affiliate of the bank • May lose value

Image provided by Transcendence Theatre Company.

© 2024 RBC Wealth Management, a division of RBC Capital Markets, LLC, registered investment adviser and Member NYSE/FINRA/SIPC. All rights reserved.

24-JD-01488 (05/24)

BENZIGER[®]

family winery

explore our
SONOMA MOUNTAIN ESTATE



Wine Tasting Thursday- Monday

NO APPOINTMENT NEEDED



PLAN YOUR VISIT

BENZIGER FAMILY WINERY | 1883 LONDON RANCH ROAD, GLEN ELLEN, CA
888.490.2739 | WWW.BENZIGER.COM



© 2024 BENZIGER FAMILY WINERY, GLEN ELLEN, CA



We proudly support Transcendence Theatre Company



Local banking you can trust, with low-rate
loans to help you reach your dreams.



redwoodcu.org | 1 (800) 479-7928

Federally insured by NCUA



WELCOME TO OUR 2024 SEASON

TRANSCENDENCE
THEATRE COMPANY



“I know nothing with any certainty, but the sight of the stars makes me dream.”

- Vincent Van Gogh

Thank you from the bottom of our hearts for joining us for Broadway in Sonoma in the Magical Field of Dreams! We are immensely grateful to the City of Sonoma and the Field of Dreams for allowing us to continue to share a summer of extraordinary entertainment with our community.

Sonoma truly is a magical place where “Life Opens Up.” There is a special energy here because each one of us uniquely contributes to this beautiful kaleidoscope of brilliance that inspires people from around the world. This summer you have the chance to create your own special Sonoma experience before and after the performance with our 2024 Summer Season partners.

Let’s sit under the stars together this evening, cherishing the beauty of the present moment. May the music, dance, and love inspire you to dream and live life to the fullest!

Have the Best Night Ever!

Amy Miller, Creative Vision Director

Brad Surosky, Executive Director

Tony Gonzalez, Artistic Director

WE NEED YOUR INPUT!

Take this short (5 question) survey for the chance to win two front row seats to the opening night of our 2025 Summer Season.

<https://tinyurl.com/plazasurvey14>



BEST. NIGHT. EVER.

JOIN US FOR OUR 2024 SEASON

“Theatre company of the decade” 



A musical celebration of Sonoma

JUNE 20-23



MidAtlantic Men meet Queenz of Rock

JULY 25-28



A sizzling summer block party

AUGUST 15-18



A tribute to classic Broadway and more

SEPTEMBER 19-22

BROADWAY PERFORMERS UNDER THE STARS • STEPS FROM THE PLAZA

Get Tickets Now! • 877-424-1414 • Groups save up to 20% • BestNightEver.org
FIELD OF DREAMS • SONOMA





For the you taking care of your heart, and theirs.

Kaiser Permanente is a proud supporter of the Transcendence Theatre Company's Broadway in Sonoma.

We deliver proactive preventive care that's proven to keep you healthy,* and world-class treatment if you do get sick. Choose Kaiser Permanente, and get high-quality, personalized care, designed to help you spend more healthy years doing more of what you love.

Learn more at kp.org/santarosa

**For all that is Sonoma County.
For all that is you.**



KAISER PERMANENTE®

*for more information visit kp.org/specialtycare

CREATE YOUR SONOMA EXPERIENCE

Looking to plan your perfect evening before the Best Night Ever? Transcendence invites you to explore all that Sonoma has to offer! Create your own Sonoma experience with our amazing partner packages, wineries and tasting rooms, restaurants, and other Plaza businesses – many of which are offering special deals and pricing for Transcendence patrons.



Visit BestNightEver.org

(then “Plan Your Visit/Create Your Sonoma Experience”)



LA CREMA®



COME VISIT
OUR ESTATE IN THE
RUSSIAN RIVER VALLEY!

3575 SLUSSER ROAD, WINDSOR, CA 95492



Scan Code to Book Now

You built your
business with
hard work.

I'll earn your trust
the same way.



TALK TO US



Bank of Marin

BANKOFMARIN.COM

DAVID SHORT

FVP, REGIONAL MANAGER

(707) 265-2009

davidshort@bankofmarin.com

MEMBER FDIC

Nothing compares to
what's next.



Celebrating 20 Years in the Wine Country

WINE COUNTRY BROKERAGES | SONOMA | ST. HELENA | NAPA
SOTHEBYSREALTY.COM | 707.935.2288

© 2024 Sotheby's International Realty. All Rights Reserved. Sotheby's International Realty® is a registered trademark and used with permission. Each Sotheby's International Realty office is independently owned and operated, except those operated by Sotheby's International Realty, Inc. Equal Housing Opportunity. DRE# 00899496.

Sotheby's
INTERNATIONAL REALTY

THE GALA: A SENTIMENTAL JOURNEY

Conceived by Tony Gonzalez and Matt Smart



MARIA BILBAO



GALYANA CASTILLO



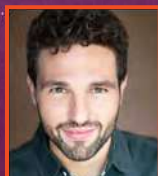
LUIS AUGUSTO FIGÜEROA



LORI HALEY FOX



TONY GONZALEZ



DAVID R. GORDON



JOEY KHOURY



AMY MILLER



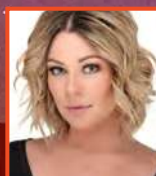
COLIN CAMPBELL McADOO



KRISTIN PIRO



DEVIN L. ROBERTS



EMILY YATES

CREATIVES

TONY GONZALEZ
Director

MATT SMART
Music Director

NICOLAS PEREZ
Associate Music Director

DANIEL SIMONS
Production Coordinator

JEFFREY PORTER
Technical Director/Lighting Designer

NILS ERICKSON
Sound Designer/Engineer

MELINDA HARE
Costume Coordinator/Dresser

SARAH E. T. JACKSON
Production Stage Manager

KAREN WEBB
Assistant Stage Manager

BAND

MATT SMART
Keys

NICOLAS PEREZ
Keys 2

ISAAC CARTER
Guitar

DANNY MIN
Bass

CAROLYN WALTER
Reeds

BRIETTA GREGER
Drums

PRODUCTION

SHAWNA YOUNG
House Manager

CASEY MCCONKIE
Audio 2

ERNESTO GARCIA
Events Supervisor

HUNTER ZANE SPRAGUE
Events Team Member

CYNTHIA WHITMAN
Spot Light Operator

ARIANNA WIEBER
General Stagehand/ Spot Light Operator

MADDEN SPRAGUE
Events Team Member

THOMAS STANESA
Events Team Member

INTERN & APPRENTICE PROGRAM

COLIN CAMPBELL McADOO
Director of Intern & Apprentice Program

CAITLYN BOGART
Music Assistant

ROSAMUND HENCINSKI
Music Assistant

CLAIRE HURD
Stage Management Apprentice

JAKE JACOBS
Sound Intern

PIPER BROOKE JOHNSON
Technical Apprentice

CHRISTOPHER LOPEZ
Photography Intern

ALISON PERKINS
Box Office/House Management Intern

GABRIELLE WHEELER
Education/Box Office Intern

MILES WOOSTER
Costumes/Props Apprentice

DIRECTOR'S NOTE | TONY GONZALEZ

The goal for the 2024 summer season was to provide a multi-faceted array of entertainment in music genre, style, production, and visual presentation in this lovely 'Field of Dreams' for you all to enjoy. As we come to the close of the summer, I have been wildly eager to bring you **The Gala: A Sentimental Journey** because it is a thrilling glimpse into the magical world of musical theater and truly a peek inside my heart and soul. If I close my eyes, I can picture each of these songs on a Broadway stage, I can smell the theater, feel the upholstered seat, hear the flip of the spotlight powering up and the click of a pair of shoes on the hardwood stage. The crowds are silent as they anticipate the story that is about to unfold.

It is one thing to compile a list of incredible music, but for the songs to come alive onstage with these phenomenal artists is an outrageous, truly awesome, and sentimental journey. The whole team here tonight has worked at their craft for years, training, dedicated, growing, learning, facing challenges, heartbreak, soaring triumphantly, daring greatly, doing it over and over to get it right, to share their talents and to shine! Please enjoy every lyric, note, smile and tear in tonight's performance. As always, we cannot thank you enough for being here this evening, we hope that the sights and sounds that inspire us will also inspire you!

THE GALA: A SENTIMENTAL JOURNEY

ACT ONE

New York, New York
The Sound of Music
Where is the Life that Late I Led
Gotta Get a Gimmick
Something's Coming
A Man Can Dream
Wicked Medley
Waving Through a Window
The Winner Takes it All
A Chorus Line Medley
What Do I Need With Love
Daddy's Son
One Day More

ACT TWO

Seasons of Love
Fugue for Tinhorns
I Am What I Am
Ladies Who Lunch
I Gotcha
Not Getting Married Today
Nobody Does it Like Me
Maybe This Time
When You're Good to Mama
Dear Theodosia
You'll Never Walk Alone
Memory
Stand By Me

BIOS | THE GALA: A SENTIMENTAL JOURNEY

MARIA BILBAO (*Performing Artist*) is thrilled to be back in Sonoma celebrating the magic that is Transcendence Theatre Company. She was most recently seen in the 2023 Broadway Revival of *Sweeney Todd*. Many thanks to this incredible team.

GALYANA CASTILLO (*Performing Artist*) Tickled pink to join the Transcendence Team for the first time! Credits include: *Sweeney Todd* (Broadway), *Waitress* (National Tour), *Come From Away* (Theatre Aspen), *Something Rotten* (Pioneer Theatre), *Once on this Island* (Pioneer Theatre), *Lady Day* (the Prizery), *Ain't Misbehavin'*. Love to my wonderful and supportive wife and family! @galygee

LUIS AUGUSTO FIGUEROA (*Performing Artist*). Born in Panama and raised in the DMV. Theatre credits: *Grand Horizons*, *A Chorus Line*, *Wicked*, *42nd Street*. Film: *Road to L'Etape du Tour*, *And So It Goes*, *Winter's Tale*, *Every Little Step*. Luis is an Oscar-nominated producer (*Feeling Through*) and award-winning writer (*NANDO* - feature film currently in development.)

LORI HALEY FOX (*Performing Artist*) is thrilled to return to Transcendence following *Sister Act* in London's West End. Other West End credits include *Hairspray*, *Dirty Dancing*, *The Wedding Singer*, *Elf*, *Big*, *White Christmas*, and *Mamma Mia!* (also Broadway). Lori is very excited to be back in Sonoma and a part of this year's Gala Celebration.

TONY GONZALEZ (*Conceiver/Director/Performing Artist*). Returning to Transcendence, Tony brings his love for the arts and deep dedication to the vibrant community that makes it all possible. Past credits: Cedar Point Live Entertainment, *Mamma Mia!* (Broadway/Tour), Disney On Classic, Stages St. Louis, and multiple awesome seasons with Transcendence. Thank you for joining us under the stars in the Field of Dreams!

DAVID R. GORDON (*Performing Artist*). Favorites: Barry Mann (*Beautiful*), Leo Frank (*Parade*), Perchik (*Fiddler on the Roof*), Lonny (*Rock of Ages*), Jimmy (Nat'l Tour, *Flashdance*), Roger (Int'l Tour, *Grease*), Huey (*Memphis*), *Charlie...Chocolate Factory* (Nat'l Tour). David and his wife established their own Sonoma-based wine company: www.IntermissionCellars.com. Love to Kristin, Cooper, family, and DGRW! @DRGeffects @IntermissionCellars

JOEY KHOURY (*Performing Artist*), originally from Kaysville, Utah. NYC: *Altar Boyz*, *Radio City Christmas Spectacular*. National Tours: *Cabaret* (Roundabout Theatre Company), *Altar Boyz* (1st National), *Radio City Christmas Spectacular* (Arena Tour). Favorite Regional: *The Pirates of Penzance* (Frederick), *Fiddler on the Roof* (Motel), *Little Shop of Horrors* (Seymour).

COLIN CAMPBELL MCADOO (*Performing Artist*) toured with *The Look of Love* (Marc Morris Dance); and performed Off-Broadway, Carnegie Hall, Lincoln Center, Sydney Opera House, regional theatres and symphonies nationwide. A singer/songwriter, voice-over artist, director of education and outreach at Transcendence, and school artistic director in Philadelphia. Love to baby Finn & Wiggles. For Ankur. @colinmca2

KRISTIN PIRO (*Performing Artist*). Hi, Sonoma Fam! Broadway: *Catch Me if You Can*, *Rocky*, *An American in Paris*, *Charlie & the Chocolate Factory*, *Spamalot*. Kristin and husband David also make wine! Check out their theater inspired wine at www.IntermissionCellars.com. Love and thanks to my family, David, and my perfect boy, Cooper! @kpiroette @intermissioncellars

DEVIN L. ROBERTS (*Performing Artist*) An alumnus of the Philadelphia Dance Company, studies include The Ailey School (Denise Jefferson). Credits: Disney's *The Lion King* (Broadway/National Tour), *Ain't Too Proud* (Berkeley Rep), *Beetlejuice* (National Theatre), *In the Heights* (Dallas Theater Center), *The Life* (City Center Encores), background vocalist for *America's Got Talent* finalist Jonah Smith. @devinroberts727

EMILY YATES (*Performing Artist*), award-winning vocalist has captivated audiences worldwide, starring in *42nd Street* and *Joseph...Dreamcoat*. A Las Vegas headliner, she's also a producer and the founder of Ele Parade Creations. Latest album at www.emilyannyates.com. Instagram: @emilysings2. In loving memory of my beloved parents, I perform for you! "And I will always love you."

MATT SMART (*Conceiver/Music Director/Keys*). Recent: *A Christmas Carol* (Music Director); *Hamilton* (Asst. Conductor, Keyboard 2). Worked with Michael Feinstein, Michael Tilson Thomas, Bonnie Raitt, and Alex Lacamoire. A Bay Area native, he has degrees in music from Pomona College and Butler University and is a teacher, composer, music director, performer, and music producer.

NICOLAS PEREZ (*Associate Music Director/Keys 2*) is a NYC music director and accompanist. TTC credits include *Dancing in the Street* (music director), *Let's Dance* and *An Enchanted Evening* (associate music director). Recently he accompanied Martin Short and Franc D'Ambrosio in solo shows. He can be found playing at NYC piano bars when not in the theater.

DANIEL SIMONS (*Production Manager*), from Ogden, UT, has toured the world with Cirque du Soleil, Sundance Film Festival, and the Olympics, and continues to work with regional theatres and other theatrical production companies. He prefers to be a dad to his two boys, and husband to his wonderful wife, Ginger Bess. Love you all.

JEFFREY PORTER (*Technical Director/Lighting Designer*). Lighting designer and technical director for theatre and special events; head of product for LiveControl.io. *BroadwayWorld* San Francisco Award - Lighting; Ovation nomination - Sound Design. Many hats with Transcendence since 2012. Northwestern University grad based in Los Angeles.

NILS ERICKSON (*Sound Designer/Engineer*) is a 20-year veteran freelance sound designer and engineer of theater, concerts, and special events. He studied at the College of Wooster and Berklee College of Music before starting his own sound company, Traveling Monkey Sound. He's three-time winner for Best Sound Design of the year and decade from *BroadwayWorld.com*.

MELINDA HARE (*Costume Coordinator/Dresser*) is a costume designer who has worked in California, Washington, and New York. BA from San Francisco State University. MFA from University of Washington.

SARAH E. T. JACKSON (*Production Stage Manager*) is thrilled to be back! Recent credits include *Clue* (1st National Tour); *Fiddler on the Roof* (Philadelphia Orchestra); *The Lion King* (National Tour); *Into the Woods* (Juilliard); *Kiss, Mary Jane* (Yale Repertory Theatre); *The Full Monty*, *A Chorus Line* (Transcendence), among others. Education: MFA Stage Management, Yale School of Drama.

KAREN WEBB (*Assistant Stage Manager*). Karen is grateful to return for her 15th show with Transcendence! From GA, to NYC, to CA — much love to all my family and friends...and of course my Sonoma Host Mom, Judith, for the continual support! Enjoy the show, y'all!

AMY MILLER (*Creative Vision Director*) is proud to have founded Transcendence with her husband Brad Surosky, many passionate artists, and this incredible community. For 17 years, Amy served as artistic director and is excited to step into her new role as the vision expands into the future. Broadway/National Tour: *42nd Street*. Greatest role: Mom to Micah William Surosky. Thanks a million to Tony Gonzalez for his artistic brilliance and our extraordinary 25-year friendship. So proud of you! TEAM!

BRAD SUROSKY (*Executive Director*) is a founder of Transcendence and believes art is service. Since 2012, he has produced every Transcendence production and joined with this incredible community to inspire over 350,000 people. Brad is married to Creative Vision Director Amy Miller, and loves living in Sonoma with his son Micah.



THE GALA
Team bios



DOWNLOAD
Full program here



TRANSCENDENCE
Team bios

**DONATIONS
100% MATCHED!**

TRANSCENDENCE
THEATRE COMPANY



IF WE BUILD IT, THEY WILL COME

**Help us raise
\$1,250,000
by September 26**



**Donate or make
a commitment**



**Help us continue to bring the
magic and enrich the lives of all
who came to our field of dreams,
wherever it may be.**

TRANSCENDENCE PRESENTS
**BROADWAY
HOLIDAY**



DECEMBER 18-19
AT THE HISTORIC SEBASTIANI THEATRE



Get Tickets Now! • 877-424-1414
Groups Save up to 20% • BestNightEver.org
SEBASTIANI THEATRE • SONOMA





Supporting the Community and the Arts.

We're your community bank
and we're here to help.

[EXCHANGE BANK.COM](https://www.exchangebank.com)



FRIEDMAN
FAMILY FOUNDATION

WE ARE HONORED

TO SPONSOR

**TRANSCENDENCE THEATRE COMPANY'S
BROADWAY IN SONOMA**

[friedmanshome.com](https://www.friedmanshome.com)

TRANSCENDENCE TEAM

LEADERSHIP

Amy Miller
Creative Vision Director

Brad Surosky
Executive Director

Tony Gonzalez
Artistic Director

STAFF

Sam Borthwick
Development Associate

Alli Deering
Development and Community
Relations Coordinator

Dina Howard
Director of Business
Operations

Colin Campbell McAdoo
Community Outreach
Coordinator

John Meislahn
Director of Sales
and Partnerships

Steve Mullen
Wine Coordinator

Malloy Schaffner
Marketing Communications
Coordinator

Maggie Simental
Operations Manager

Matt Smart
Music Supervisor

Colleen Till
Company Manager

August Volz
Education and Box Office Associate

Leesa Young
Box Office Manager

Shawna Young
Education Associate

CONSULTANTS

Deb Fiscella
Marketing Consultant
KM&co

Brett Fisher
Business Projects Liason

KellyAnne Hanrahan
Graphic Design

Andrew Koenigsberg
Business Consultant

Kent McIngvale
Marketing Consultant
KM&co

Julie Richter
Public Relations

BOARD OF DIRECTORS

Susan Hoeffel President
Harriet Derwingson
Andrew Koenigsberg
Amy Miller

Mark Smigelski
Jonathan Soh
Fabiola Sotomayor
Brad Surosky

OFFICERS

Jan Hoeffel Vice President **Brett Fisher** Treasurer

*"Dr. Bean and staff made my mouth
sing like never before!"*

- David R. Gordon



**JEFFREY D BEAN,
DDS**

Family Dental Care

Free Consultation/Exam

1104 Sonoma Ave #102 • Santa Rosa
707 542 4414

**CREATING COMMUNITY
FOR OVER 40 YEARS**



SANTA ROSA HEALDSBURG SONOMA
PARKPOINTHEALTHCLUB.COM





Visit **THE PRESENTATION SCHOOL**

The Only Independent School in Sonoma.

Accepting Application for
TK-8th Grade for 2024-2025

To schedule a tour and to learn more Information:
admissions@presentationschool.com
 707-935-0122 ext 202



**PERRY
JOHNSON
ANDERSON
MILLER &
MOSKOWITZ**
LLP ATTORNEYS AT LAW

Perry, Johnson, Anderson, Miller & Moskowitz applauds
BROADWAY IN SONOMA



BE WELL REPRESENTED

We are honored to practice law here. Sonoma County is our home. We raise our families here, are actively involved in the community and are proud to support Transcendence Theatre Company.

REAL ESTATE
LITIGATION
FAMILY LAW

FINANCE
WINE LAW
LAND USE

ESTATE PLANNING
PERSONAL INJURY
EMPLOYMENT LAW

DISTRESSED INVESTMENTS
PROBATE & TRUST ADMINISTRATION
BUSINESS FORMATION & TRANSACTIONS

438 1ST STREET, 4TH FLOOR, SANTA ROSA, CA 95401 (707) 525-8800 WWW.PERRYLAW.NET

FRIEND

1 year contribution that makes a powerful impact on art, youth, and our community.

\$100,000+

Vickie Soulier
Vadasz Family Foundation

\$25,000+

Carmen Castro-Franceschi &
Greg Franceschi
Erin & Francis Collins
Linda Dodwell
Mac & Leslie McQuown
Valerie Pistole & Jeffrey Walter
Ken & Dana Stokes
Dave & Vicki Stollmeyer Family Fund
Paula Pretlow
Chuck & Cathy Williamson

\$15,000+

Charitable Remainder Trust of
Jeanette Evans
Jean Simpson
Mark Smigelski & Bruce Kikuyama
Gerry Sweeney & Franklin Albro

\$10,000+

Julie & Thomas Atwood
Bradford Davis & Gary Masch
Pamela Ingalls
Carol & Stephen Latimer Family
Charitable Trust
Esty Lawrie & Tom Landy
Brenda & Marc Lhormer
Thomas Miller
Ann Paolini & David Lambert
Kevin & David Schuh
Karen Sherman
Judith Walsh
Anonymous

\$5,000+

Stephanie Anderson Pugash
Gayle Arrowood & Tom Weaver
Richard & Rickie Ann Baum
Bergin Family Trust
Joann & Jack Bertges
Suzanne Brangham
Mike & Joan Buckley
Jim & Suzanne Franklin

Karen Kennedy
Holly & Steve Kyle
Marie & Barry Lipman
Ernie McNabb & Riki Rafner
Ann & Barry Reder
Judy Scotchmoor
Verlander Family
Anonymous

\$2,500+

Deborah Emery
Feldman Family
Jim & Nuala Finn
Frank & Barbro Greene
Amy Grossman
Mike & Nancy Hall
Gary Hartwick
Michael & Diane Hernandez
Joan & Rich Little
Susan & Kim Marshall
Laura McCormick
Douglas & Marcia Mo
Brian Ness & Michael Weiss
Jennifer Ramsey
Charlie Smith & Ninie Phoon
Dianne Snedaker & Glen Greilsheimer
Deborah Trefz & Rocky Daniels

\$1,000+

Susie Albrecht
Gerald Aubert
James & Deborah Baratta
Jeff & Shelly Bean
John Boland & James Carroll
Richard & Cheryl Brandon
Robert Braun
The Breretons
Marchelle & Curt Carleton
Jan Clausen & Michael Brenneman
Judy Coffey
Steven Correll & Jim Shay
John & Christy Coulston
Gary R. Cramer
John Cullison
Tom & Diana Degenhardt

Roxanne Edelen
EGS Consulting Inc.
Janet Estes & Mark Sponsel
David Faris
Gerald & Connie Farr
Gaby & Aubrey Federal
Mark Fishkin
Brian Fitzgibbons & Keith Gray
Jeff Gaines
Dan Gallagher & Ronald Moser
Mari Jo & Gene Grace
Bob & Gretchen Gardner
Charles Hadaway
Donna Halow
Susan Idell
Rocky Jacobs-Carpenter
Robert & Evonne Kamen
Carole Kelleher & Jim Schratz
Meg Kellogg
Anne Kenner & Jim Scopa
CJ Kersch
John Kryzanowski & Vicki Hofmeister
Jennifer Kuenster & George Miers
Nancy & Tony Lilly
Linda Liscom
Debra & Samuel Luoma
Christine Lynch
Douglas Mahon & Traci Duncan
Gordon Marks
Colleen McCarty
Sari & Blake McConnell
Rob Mcmanus
Mark Menke & Anne-Marie Lamarche
Gay B Meyer & Kimberly A Eisert
Mark & Andie Miller
Michael & Judy Miller
Jeanne Montague & Chad Overway
Carol Morse
Larry Moskowitz & Louise Packard
Chris Murray & Steve Evans
Donna & Leon Nelson
Domenic & Birgitta Paino
Angela Palermo
Barbara & Edmund Pascoe

Transcendence Theatre Company thanks the individuals, corporations,
and foundations whose contributions enable us to produce world-class entertainment and a
positive community impact.

\$1,000+ (continued)

Tom & Jamel Perkins
Susan Porth
Darren Post & Jeff Nguyen
James & Margo Requarth
Toby & Sally Rosenblatt
Mary Ann Rovai
Bret & Andrea Sackett
Dave & Sandy Sandine
BJ & Glen Smith

Jonathan Soh
Harvey Surosky
Jill & John Svoboda
Diane Taylor
Robert & Becky Verhoeff
John & Ricci Wheatley
Marlayne Williams
Barbara & Neal Wooley
David & Holly Zumbro
Anonymous

**TRANSCENDENT
CIRCLE**

A gift included in a will or
estate plan to help ensure we
stay strong for future generations.

Inga Aksamit & Steve Mullen
Cindy Belluomini
Bradford Davis & Gary Masch
Harriet Derwingson
Whitney & Jeanette* Evans
Brian Fitzgibbons & Keith Gray
Susan & Jan Hoeffel
Malcolm Jones*
Andrew Koenigsberg & Rob Izzo
Amy Miller & Brad Surosky
Bob & Carole Nicholas
Piallat Family Revocable Living Trust
Valerie Pistole & Jeff Walter
Darren Post & Jeff Nguyen
Alan & Susan* Seidenfeld
Charitable Trust
Bob Stinson
Jeff Wolinsky & Theresa Noe
Anonymous

**In Memoriam*

VISIONARY

An annual commitment to on-going support.

\$25,000+

Alain & Jacquy Piallat
Chuck & Cathy Williamson

\$15,000+

Susan & Jan Hoeffel
Andrew Koenigsberg & Robert Izzo
Mark Lyon & Daniel Cisneros
Steve Mullen & Inga Aksamit
Linda & Matt Simi

\$10,000+

Marie Fernandez
William & Susan Friedman
Mike & Nancy Hall
Maggie Kaplan
Barbara Morrison
Debbe Noto & Chuck Pendell

\$5,000+

Carolyn Alioto
Gary Archuleta & Brent Burch
Helge Bruckner & Renee Bowler
Harriet Derwingson
In Memory of Malcolm Jones
Nora Marshall

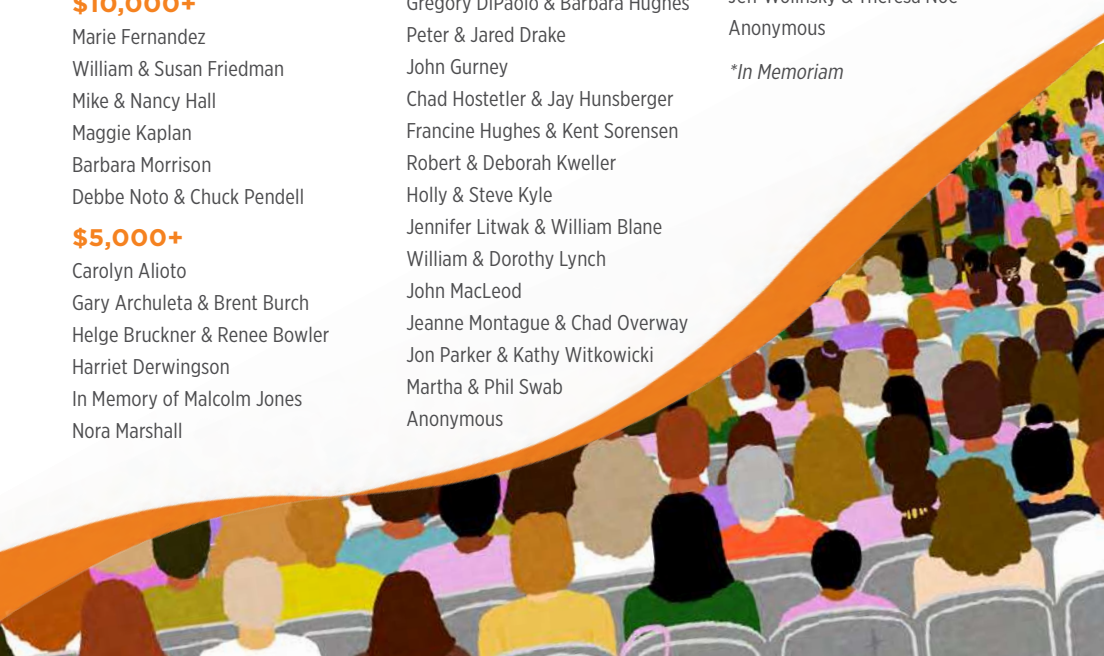
Deborah Trefz & Rocky Daniels
Anonymous

\$2,500+

Robert Crane & Lucy Weiger
Jeffrey Wolinsky & Theresa Noe

\$1,000+

Linda Arons
Timothy & Corey Benjamin
Jim & Laurie Bruschera
Gregory DiPaolo & Barbara Hughes
Peter & Jared Drake
John Gurney
Chad Hostetler & Jay Hunsberger
Francine Hughes & Kent Sorensen
Robert & Deborah Kweller
Holly & Steve Kyle
Jennifer Litwak & William Blane
William & Dorothy Lynch
John MacLeod
Jeanne Montague & Chad Overway
Jon Parker & Kathy Witkowitz
Martha & Phil Swab
Anonymous



Discover the awe-inspiring sights and history of Sonoma's wine country from a unique perspective on an electric trike.

PUSHPAK
TOURS

www.pushpakmotors.net/tours
707-343-1192



Ride our three-wheel electric Pushpaks through Sonoma's wine country. Tours feature historical stops, vineyard excursions, wine and cheese tastings, and scenic stops. Custom tours for parties over twelve are available. Daily tours depart at 10 am and 1:30 pm. **cost of wine tastings not included*

PUSHPAK is a proud sponsor of **TRANSCENDENCE**

SUMMER DANCE 2024

2024 SUMMER SESSION
6 WEEKS: MON. JUNE 24-SAT. AUG. 3
Kids • Teens • Adults

CONTEMPORARY • JAZZ • TAP • HIP HOP
BALLET • MUSICAL THEATRE • ACROBATICS

We offer pro-rated tuition and family rates!

DANCE CENTER SANTA ROSA
 @dancecentersantarosa

707-575-8277 www.thedancecenter.com
56 W. 6th St. Historic Railroad Square, Santa Rosa

Sonoma County's
award-winning dance studio

DANCE
CENTER

COMMUNITY IMPACT

OUR MISSION

To create extraordinary experiences that inspire all to live life to the fullest.

OUR COMMUNITY IMPACT

We are committed to inspiring our community through the unique, life-affirming power of live musical performance. Over the last 13 years, we have entertained more than **340,000** audience members; inspired **11,000** youth through our arts education programs; donated **8,000** tickets to communities in need; produced **160** community engagement projects; and made millions of memories.

TRANSCENDENCE FOR ALL

By creating arts education and community engagement programs that instill a love of the arts, as well as our annual donation of tickets, we help to build a more diverse audience, and strive to make a positive impact in people's lives.

For more information please visit [BestNightEver.org](https://www.BestNightEver.org)



HOME
away from **HOME**

Fairmont
SONOMA MISSION INN & SPA



Fairmont Sonoma Mission Inn & Spa is proud to support
Transcendence Theatre Company

100 BOYES BLVD. | SONOMA, CA | (707) 938-9000 | WWW.FAIRMONT-SONOMA.COM



Sonoma United Methodist Church

109 Patten Street

Sonoma, CA 95476

All are Welcome!

Office Contact Info:

707-996-2151

sumcoffice@comcast.net

Join us for
Sunday Worship at 10 am
Pastor M@ Pearson



MAKE A PROFOUND IMPACT



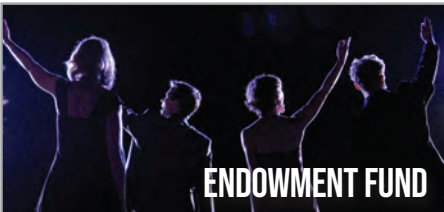
FRIEND

A one-year contribution.



VISIONARY

An annual commitment to on-going support.



ENDOWMENT FUND

A permanently invested gift.



TRANSCENDENT CIRCLE

A gift included in your will or estate plan.

DONATE

Every donation given to Transcendence ensures that we can continue our mission into the future. We are immensely grateful for your support. To learn more about becoming a donor, please contact our Development Department at **Development@ttcsonoma.org** or **877-424-1414 ext 4**.

SPONSOR

Align your brand with a community-focused performing arts organization. For more information, please contact **Development@ttcsonoma.org**.

VOLUNTEER

Help create extraordinary evenings with a sensational group of theatre lovers! For more information, please contact **VolunteerCoordinator@ttcsonoma.org**.

HOUSING

A truly one-of-a-kind experience hosting our 2024 Summer Season performers! For more information, please contact **CompanyManager@ttcsonoma.org**.

Visit **BestNightEver.org** and click **SUPPORT • 877-424-1414**

Thank you to the

FIELD OF DREAMS

for making our Broadway in Sonoma dreams come true! A portion of every ticket sold during our 2024 Summer Season will be donated to the Field of Dreams to help upkeep the fields and support youth sports and recreation.



At every Transcendence performance, we partner with a local nonprofit to bring awareness to their mission and raise funds to support their great work in our community. Five percent of beverage sales from the Summer Season will be donated to these nonprofits.



Transcendence Theatre Company acknowledges the original inhabitants and storytellers of this land, the Miwok people. We commit to honoring and celebrating their past, present, and future contributions.



THE "INN" PLACE

SONOMA, CA
707-938-9200

STEPS FROM THE PLAZA —

MILES FROM THE ORDINARY

The Sonoma Valley Inn has everything you need for a wonderful Wine Country escape. Relax and rejuvenate in a comfortable Garden View Room or luxurious Mission Suite. All feature wood burning fireplaces and either a private patio or balcony. Our location is unmatched - just steps from historic Sonoma Plaza and its farm-to-fork restaurants, shopping, art galleries and 30 tasting rooms featuring locally produced, world class wines. Enjoy affordable luxury at the Inn!

BOOK NOW AT SONOMAVALLEYINN.COM



PET FRIENDLY



FREE PARKING



FREE HOT BREAKFAST



NO RESORT FEES



FREE WIFI



FREE YOGA



TRAVEL
ADVOCACY
GROUP



JMA SECURITY PEACE OF MIND SECURED

Protecting what matters most to you.

CONTACT US



707.206.7766

131A STONY CIRCLE, STE. 500 SANTA ROSA, CA 95401

WWW.JMASECURITY.COM



PPO 17199



VOICE OF TRANSCENDENCE THEATRE.

TRANSCENDENCE
THEATRE COMPANY



THANK YOU TTC!



**We are proud to be your
Community Partner!**



**Santa Rosa
Signarama**
The way to grow your business.

TRADE SHOWS • BANNERS • VEHICLE GRAPHICS
MONUMENTS • REAL ESTATE SIGNS • ADA
EXHIBITS • ARCHITECTURAL • SAFETY SIGNS
707-523-0606 sr-signs.com

**SONOMA
ARTSLIVE**
theater company

2024-2025
Season to Shine



**“One of the Bay Area's
premier theater companies.”**

Barry Willis-President-SF Bay Area Theatre Critics Circle

SonomaArtsLive.org



ALAN & SUSAN SEIDENFELD
CHARITABLE TRUST



THE INITIATIVE FOR MUSIC & CHILDREN

Music is the heart of our lives at the Alan & Susan Seidenfeld Initiative for Music & Children.

We believe the discipline and hard work necessary to excel in music and theatre teaches a lesson for everything in life.

Our mission is to expose as many children as possible to excellent music and to promote music education programs that enhance the possibilities of children throughout the county. Transcendence Theatre Company is one of the many ways we fulfill our mission and we are thrilled to be a part of such a great organization.



Connecting the **Community**. Supporting the **Arts**.

The Press Democrat



Download the app

Subscribe today

[PressDemocrat.com/subscribe](https://www.pressdemocrat.com/subscribe)